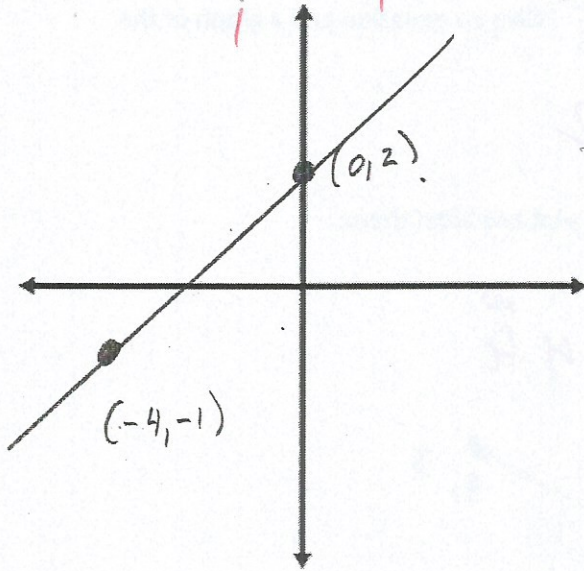


4. Write an equation for the linear function shown in the graph below.

Ans: $y = \frac{3}{4}x + 2$ 2



$$\frac{0, 2}{-4, -1} \\ \hline \frac{3}{4}$$

5. Write an equation for the linear function shown in the table below:

X	Y
-9	-3
-6	-1
-3	1
0	3

correct slope calc shown = 1

$$\frac{-3 - -1}{-9 - -6} = \frac{-2}{-3} = \frac{2}{3} \quad 3$$

$$y = \frac{2}{3}x + 3$$

↑ only = 1

3