

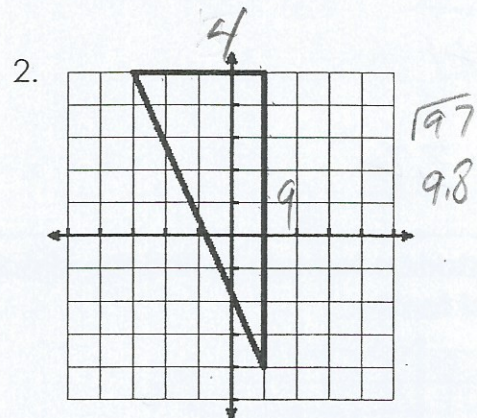
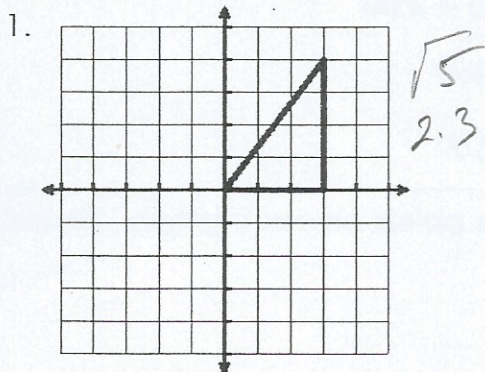
Name: \_\_\_\_\_ Date: \_\_\_\_\_

### Pythagorean Theorem & Distance Formula

**Pythagorean Theorem**

$$\text{leg}^2 + \text{leg}^2 = \text{hyp}^2$$

Use the Pythagorean Theorem to find the length of each hypotenuse. Round to the nearest tenths.



Use the Pythagorean Theorem to find the missing side. Round to the nearest tenths.

3. leg = 8, leg = 15, hyp = 17

$$\sqrt{289}$$

4. leg = 3, leg =     , hyp = 12

$$\sqrt{135}$$

Use the Pythagorean Theorem to find the distance between each pair of points. Round to the nearest tenths.

