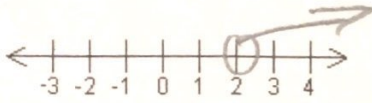


# Graphing Linear Inequalities

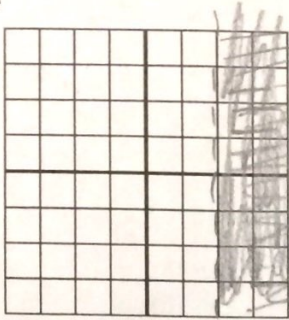
Name \_\_\_\_\_

2 variables

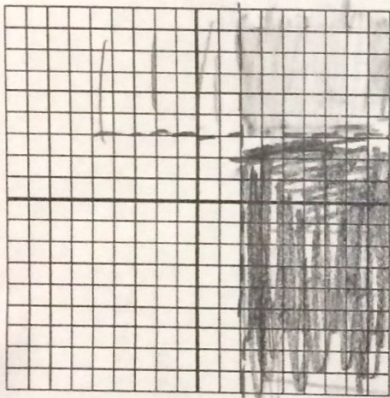
1.) graph  $x > 2$  on a number line



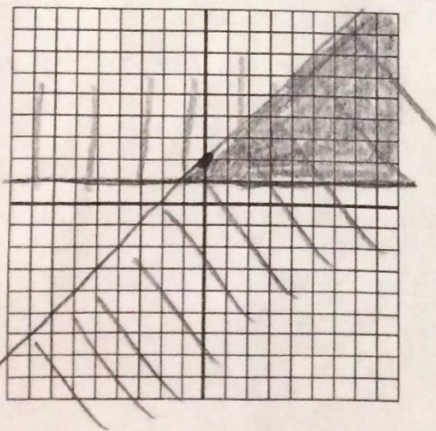
2.) graph  $x > 2$  on a coordinate plane



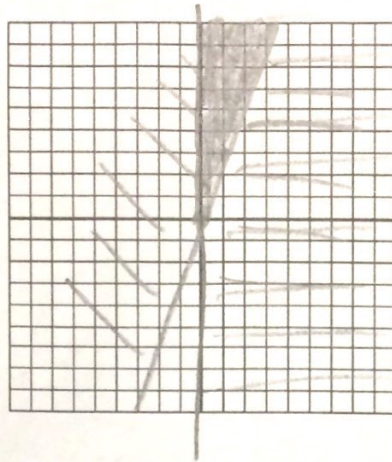
3.) graph  $x > 2$  and  $y < 3$



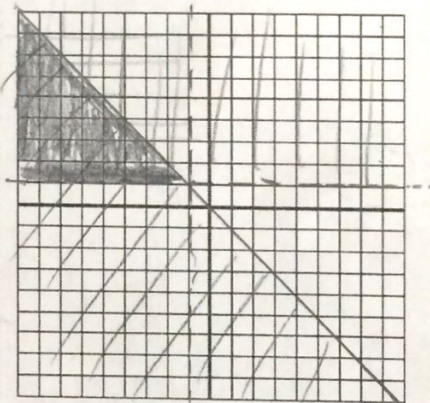
4.) graph  $y \leq x + 2$  and  $y \geq 1$



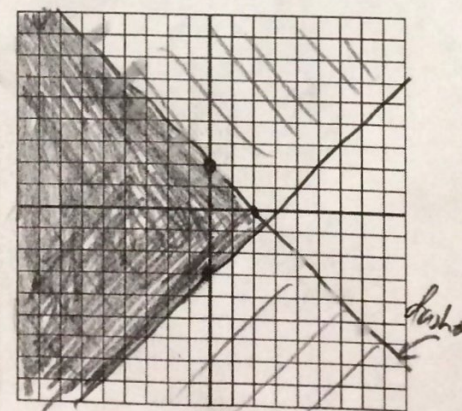
5.) graph  $x \geq 0$  and  $y > 3x$



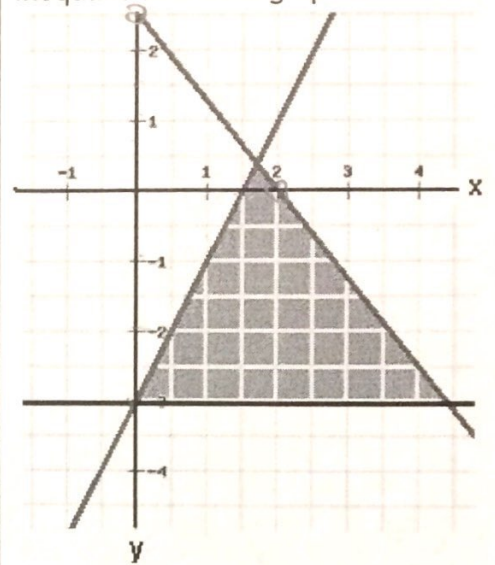
6.) graph  $y \leq -x$  and  $y > 1$  and  $x < -1$



7.) graph  $y \geq x - 3$   
 $y < -x + 2$



8.) Write the system of inequalities that is graphed here.

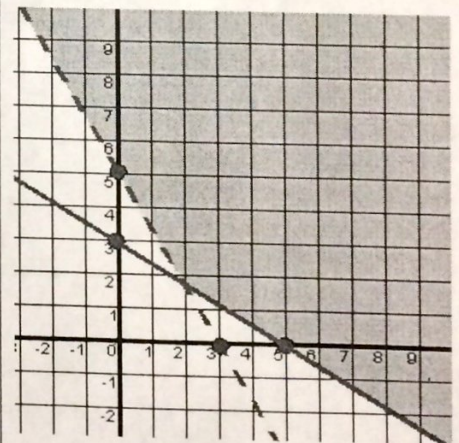


$$y \leq 2x - 3$$

$$y \leq -\frac{5}{4}x + 3$$

$$y \geq -3$$

9.) Write the system of inequalities that is graphed here.



$$y > -\frac{5}{3}x + 5$$

$$y \geq -\frac{2}{3}x + 3$$